

PESCADERO FIRE STATION 59 RELOCATION PROJECT

PROPOSED FIRE STATION 59 LOCATION; 350-360 BUTANO CUTOFF, PESCADERO, CA

EXISTING FIRE STATION 59 LOCATION; 1200 PESCADERO RD. PESCADERO, CA



ABBREVIATIONS

#	POUND/NUMBER	CPT.	CARPET	FLOOR.	FLUORESCENT	MTL.	METAL	SMS.	SHEET METAL SCREW
(E)	EXISTING	CTSK.	COUNTERSINK	FPF.	FIREPROOF	MUL.	MULLION	SPCC.	SPECIFICATION
(N)	NEW	D.F.	DRINKING FOUNTAIN	FT.	FOOT/FEET	N.	NORTH	SQ.	SQUARE
<	ANGLE	D.O.	DOOR OPENING	FTG.	FOOTING	N.I.C.	NOT IN CONTRACT	STA.	STATION
@	AT	D.S.P.	DRY STANDPIPE	FUR.	FURRING	N.T.S.	NOT TO SCALE	STD.	STANDARD
C/L	CENTERLINE	DBL.	DOUBLE	FUT.	FUTURE	NO.	NUMBER	STL.	STEEL
P/L	PLATE/PROPERTY LINE	DEPT.	DEPARTMENT	G.B.	GRAB BAR/GRADE BREAK	NOM.	NOMINAL	STOR.	STORAGE
/DIA.	DIAMETER/ROUND	DET.	DETAIL	G.F.R.G.	GLASS FIBER REINFORCED GYPSUM	O.A.	OVERALL	STRUC.	STRUCTURAL
A.B.	AGGREGATE BASE	DIA.	DIAMETER	G.I.	GALVANIZED IRON	O.C.	ON CENTER	SUSP.	SUSPENDED
A.C.	ASPHALT CONCRETE	DISP.	DISPENSER	GA.	GAUGE	O.D.	OUTSIDE DIAMETER/DIMENSION	SYM.	SYMMETRICAL
A.D.	AREA DRAIN	DN.	DOWN	GALV.	GALVANIZED	O.H.	OVERHEAD	T.	TREAD
A.F.F.	ABOVE FINISHED FLOOR	DR.	DOOR	GL.	GLASS	O.V.	OVER	T.S.	TOP AND BOTTOM
ACOUS.	ACOUSTICAL	DS.	DOWNSPOUT	GND.	GROUND	OFF.	OFFICE	T.A.S.	TONGUE AND GROOVE
ADJ.	ADJUSTABLE	DWG.	DRAWING	GR.	GRADE	OPNG.	OPENING	T.C.	TOP OF CURB
AHL.	AIR HANDLING UNIT	DWR.	DRAWER	GYP.	GYPSUM	OPP.	OPPOSITE	T.O.	TOP OF
ALUM.	ALUMINUM	E.	EACH	H.B.	HOSE BIBB	P.C.	PRECAST	T.O.F.	TOP OF FRAMING
APPROX.	APPROXIMATE	E.J.	EXPANSION JOINT	H.C.	HOLLOW CORE/ACCESSIBLE CURB RAMP	P.I.V.	POST INDICATOR VALVE	T.O.S.	TOP OF STEEL
ARCH.	ARCHITECTURAL	E.P.	ELECTRICAL PANELBOARD	H.G.	HARDWARE GROUP	P.M.	PRESSED METAL	T.S.	TUBE STEEL
ASB.	ASBESTOS	E.W.C.	ELECTRIC WATER COOLER	H.M.	HOLLOW METAL	P.O.C.	POINT OF CONNECTION	T.W.	TOP OF WALL
AUTO.	AUTOMATIC	E.L.	ELEVATION	H.W.D.	HARDWOOD	P.T.	PRESSURE TREATED	T.E.L.	TELEPHONE
B.D.F.	BUILDING DISTRIBUTION FACILITY	ELEC.	ELECTRICAL	HWWD.	HARDWOOD	PL.	PLATE	TER.	TERAZZO
B.F.P.	BACK FLOW PREVENTER	ELEV.	ELEVATION	HOWE.	HARDWARE	PLAS.	PLASTER/PLASTIC	THK.	THICK
BD.	BOARD	EMER.	EMERGENCY	HR.	HOUR	PLYWD.	PLYWOOD	TYP.	TYPICAL
BIT.	BITUMINOUS	ENCL.	ENCLOSURE	HSS.	HOLLOW STEEL SECTION	PR.	PAIR	U.O.N.	UNLESS OTHERWISE NOTED
BLDG.	BUILDING	EQ.	EQUIPMENT	HT.	HEIGHT	PT.	POINT	UR.	URINAL
BLK.	BLOCK	EQ.	EQUIPMENT	I.D.	INSIDE DIAMETER/DIMENSION	PTN.	PARTITION	VCT.	VINYL COMPOSITION TILE
BLKG.	BLOCKING	EXIST.	EXISTING	I.D.F.	INTERMEDIATE DISTRIBUTION FACILITY	Q.T.	QUARRY TILE	VERT.	VERTICAL
BM.	BEAM	EXP.	EXPANSION	INSUL.	INSULATION	R.	RISER/RADIUS	VEST.	VESTIBULE
BTM.	BOTTOM	EXT.	EXTERIOR	INT.	INTERIOR	R.D.	ROOF DRAIN	W.	WEST
BW.	BACK OF WALK	F.A.	FIRE ALARM	JAN.	JANITOR	R.O.	ROUGH OPENING	W.C.	WATER CLOSET
C.B.	CATCH BASIN	F.A.A.N.	FIRE ALARM REMOTE	JT.	JOINT	R.W.L.	RAIN WATER LEADER	W/O	WITHOUT
C.G.	CORNER GUARD	F.B.	FLOOR DRAIN	KIT.	KITCHEN	REF.	REFRIGERATOR	WP.	WOOD
C.I.	CAST IRON	F.D.	FLOOR DRAIN	LAB.	LABORATORY	REG.	REGISTER	WP.	WATERPROOF/WORK POINT
C.I.D.	CLEAR INSIDE DIMENSION	F.D.C.	FIRE DEPARTMENT CONNECTION	LAM.	LAMINATE	RENF.	REINFORCED	WSCT.	WAINSCOT
C.J.	CONTROL JOINT	F.E.	FIRE EXTINGUISHER	LAV.	LAVATORY	REQD.	REQUIRED	WT.	WEIGHT
C.L.	CENTERLINE	F.E.C.	FIRE EXTINGUISHER CABINET	LKR.	LOCKER	RESIL.	RESILIENT	XFMR.	TRANSFORMER
C.M.U.	CONCRETE MASONRY UNIT	F.F.	FINISH FLOOR	LT.	LIGHT	RH.	REDWOOD		
C.O.	CASED OPENING/CLEAN OUT	F.F.E.	FINISH FLOOR ELEVATION	S.	SOUTH	S.	SOLID CORE		
CAL.	CENTERLINE	F.H.	FIRE HYDRANT	S.C.	SHEET VINYL	S.S.	STAINLESS STEEL		
CAB.	CABINET	F.H.V.C.	FIRE HOSE VALVE CABINET	M.C.	MEDICINE CABINET	S.V.	SHEET VINYL		
CEM.	CEMENT	F.O.	FACE OF	M.D.	MASONRY OPENING	SCHD.	SCHEDULE		
CER.	CERAMIC	F.O.F.	FACE OF FINISH	MDF.	MEDIUM DENSITY FIBERBOARD	SECT.	SECTION		
CLG.	CEILING	F.O.M.	FACE OF MASONRY	MECH.	MECHANICAL	SH.	SHIELD		
CLKG.	CAULKING	F.O.S.	FACE OF STUDS	MEMB.	MEMBRANE	SHT.	SHEET		
CLD.	CLOSED	F.R.T.	FIRE RETARDANT TREATED	MFR.	MANUFACTURER	SHWR.	SHOWER		
CLR.	CLEAR	FS.	FULL SIZE	MH.	MANHOLE	SIM.	SIMILAR		
CNTR.	COUNTER	FDN.	FOUNDATION	MIR.	MIRROR	SHM.	SEWER MANHOLE		
COL.	COLUMN	FIN.	FINISH	MISC.	MISCELLANEOUS	MTD.	MOUNTED		
CONC.	CONCRETE	FL.	FLOOR LINE						
CONN.	CONNECTION	FLSH.	FLASHING						
CONSTR.	CONSTRUCTION	FLR.	FLOOR						
CONT.	CONTINUOUS								
COORD.	COORDINATE								
CORR.	CORRIDOR								

PROJECT SUMMARY

OWNER; SMC - LA HONDA PESCADERO UNION HIGH SCHOOL DISTRICT
CALFIRE - LEASEE OPERATOR

PROJECT LOCATION; 350-360 BUTANO CUTOFF, PESCADERO, CA.

SITE AREA; 28.61 ACRES (1,246,251.6 SF)
PROJECT AREA; 1,744 ACRES (76,000 SF)

APN; 087-053-010

DESCRIPTION;

"THE PROJECT CONSISTS OF:
1. CONSTRUCTION OF A REPLACEMENT PESCADERO FIRE STATION (STATION 59) TO BE LOCATED ON LA HONDA-PESCADERO UNIFIED SCHOOL DISTRICT PROPERTY CURRENTLY DEVELOPED WITH THE PESCADERO MIDDLE/HIGH SCHOOL AT 350-360 BUTANO CUT OFF, PESCADERO;
2. PARTIAL DEMOLITION OF EXISTING PESCADERO FIRE STATION; AND
3. CSA-11 WATER SERVICE EXTENSION TO SERVE THE FUTURE FIRE STATION AND EXISTING PESCADERO MIDDLE/HIGH SCHOOL, BOTH LOCATED AT 350-360 BUTANO CUT OFF."

ZONING; RM-CZ/CD
LCP LAND USE; INSTITUTIONAL & AGRICULTURAL
TSUNAMI ZONE - NO
FLOOD ZONE; MAJORITY ZONE X. REAR AGRICULTURE & PLY
FIELDS IN ZONE AE WITH FLOODWAY

FRONT YARD SETBACK; 50'-0"
SIDE YARD SETBACK; 20'-0"

SITE DATA; BUILDING LOT COVERAGE; 8.23 % (COMBINED FOOTPRINT; 9235 SF)
IMPERVIOUS SURFACES; 33,781 SF (44%)
LANDSCAPED AREAS; 42,781 SF (56%)
PARKING; REFER A1.01 SITE PLAN

BUILDING DATA; CONSTRUCTION TYPE; VB - FULLY SPRINKLERED
OCCUPANCY; B, R2, S2
BUILDING HEIGHT; ALLOWED; 36'-0" ACTUAL; 33'-9"
NUMBER OF STORIES; 2
BUILDING GROSS AREAS;

B OCCUPANCY; 3150 SF
R2 OCCUPANCY; 4862 SF
S2 OCCUPANCY; 4004 SF
S2 ACCESSORY; 545 SF
TOTAL AREA; 12, 561 SF

ALL WORK SHALL CONFORM TO THE FOLLOWING CODES:

- 2019 CBC CALIFORNIA BUILDING CODE
- 2019 CEC CALIFORNIA ELECTRIC CODE
- 2019 CMC CALIFORNIA MECHANICAL CODE
- 2019 CPC CALIFORNIA PLUMBING CODE
- 2019 CALIFORNIA ENERGY CODE
- 2019 CHBC CALIFORNIA HISTORICAL BUILDING CODE
- 2019 CFC CALIFORNIA FIRE CODE
- 2019 CALIFORNIA GREEN BUILDING STANDARDS CODE

PROJECT TEAM

DEVELOPER ARCHITECTURAL

COUNTY OF SAN MATEO DREYFUSS & BLACKFORD ARCHITECTS
PROJECT DEVELOPMENT UNIT 3540 FOLSOM BOULEVARD
1402 MAPLE STREET SACRAMENTO, CALIFORNIA 95816
REDWOOD CITY, CA 94063 TELEPHONE: 916 453-1234
FACSIMILE: 916 453-1236

CIVIL MECHANICAL & PLUMBING

BKF ENGINEERS GUTTMAN & BLAEVOET
1730 N. FIRST STREET, SUITE 600 2351 POWELL ST.
SAN JOSE, CA 95112 SAN FRANCISCO, CA 94133

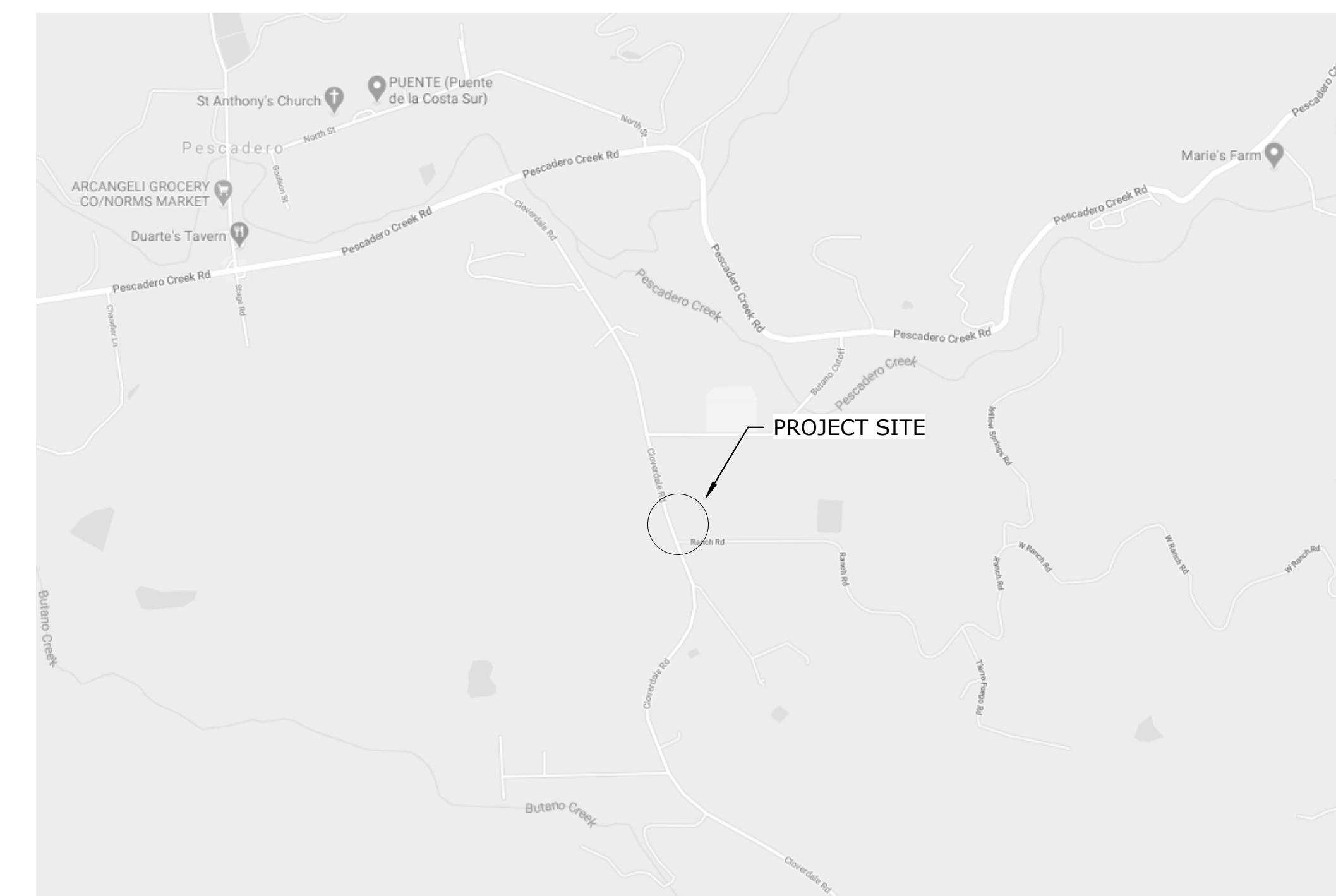
ELECTRICAL

GUTTMAN & BLAEVOET
2351 POWELL ST.
SAN FRANCISCO, CA 94133

SHEET INDEX

ARCH	G0.000 COVER SHEET
ARCH	A1.01 SCHEMATIC SITE PLAN
ARCH	A1.02 EXISTING SITE - PARTIAL DEMO PLAN
ARCH	A3.00 BUILDING ELEVATIONS

Civil	C1.0
Civil	C2.0



PROJECT SITE, VACINITY MAP

SYMBOLS

	GRID LINE TYPICAL
	WORK POINT, CONTROL POINT OR DATUM POINT
	ROOM NAME ROOM NUMBER
	KEYNOTE TAG - CSI PREFIX SEE NOTES ON SIDE OF SHEET
	DEMOLITION KEYNOTE TAG SEE NOTES ON SIDE OF SHEET
	DOOR TAG SEE DOOR SCHEDULE SHEET
	WINDOW TAG SEE WINDOW SCHEDULE SHEET
	EQUIPMENT DESIGNATION SEE EQUIPMENT SCHEDULE SHEET
	MILLWORK TYPE TAG
	FINISH MATERIAL TAG
	FINISH MATERIAL TAG (CEILING)
	FINISH MATERIAL TAG (FLOOR)
	SIGNAGE TYPE TAG
	WALL TYPE TAG SEE DETAILS
	REVISION TAG
	REFERENCE NO. SHEET NO.
	INTERIOR ELEVATION TAG SEE SHEET INDICATED
	SECTION CUT/EXTERIOR ELEVATION TAG SEE SHEET INDICATED



THIS DRAWING IS NOT FINAL OR TO BE USED FOR CONSTRUCTION UNTIL IT IS SIGNED BY THE ARCHITECT/ENGINEER

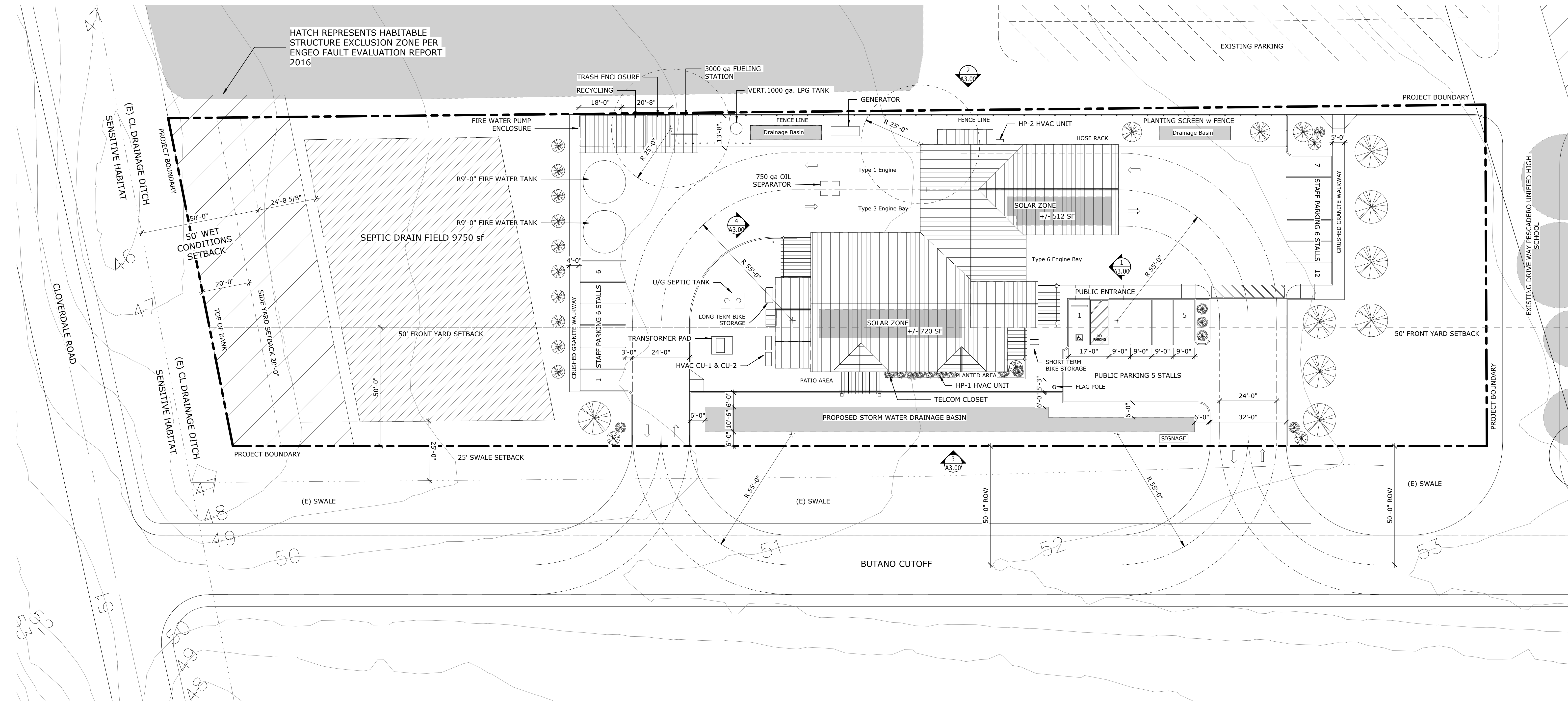
SCHEMATIC DESIGN

REVISION BY DATE
NOT FOR CONSTRUCTION

SAN MATEO COUNTY
PESCADERO FIRE STATION 59
RELOCATION PROJECT
LOCAL COASTAL PROGRAM AMENDMENT
Schematic Design Submission

COVER SHEET

C0006.00
05/11/2020
NORTH
G0.000



PROPOSED SITE PLAN
1" = 20'-0"



Existing La Honda High School Site

PROJECT SUMMARY

OWNER; SMC - LA HONDA PESCADERO UNION HIGH SCHOOL DISTRICT
CALFIRE - LEASEE OPERATOR

PROJECT LOCATION; 350-360 BUTANO CUTOFF
PESCADERO, CA.

SITE AREA; 28.61 ACRES (1,246,251.6 SF)
PROJECT AREA; 1.744 ACRES (76,000 SF)

APN; 087-053-010

DESCRIPTION; THE PROJECT CONSISTS OF:
1. CONSTRUCTION OF A REPLACEMENT PESCADERO FIRE STATION (STATION 59) TO BE LOCATED ON LA HONDA-PESCADERO UNIFIED SCHOOL DISTRICT PROPERTY CURRENTLY DEVELOPED WITH THE PESCADERO MIDDLE/HIGH SCHOOL AT 350-360 BUTANO CUT OFF, PESCADERO;
2. PARTIAL DEMOLITION OF EXISTING PESCADERO FIRE STATION; AND
3. CSA-11 WATER SERVICE EXTENSION TO SERVE THE FUTURE FIRE STATION AND EXISTING PESCADERO MIDDLE/HIGH SCHOOL, BOTH LOCATED AT 350-360 BUTANO CUT OFF.

ZONING; RM-CZ/CD
LCP LAND USE; INSTITUTIONAL & AGRICULTURAL
TSUNAMI ZONE - NO
FLOOD ZONE; MAJORITY ZONE X, REAR AGRICULTURE & PLAY
FIELDS IN ZONE AE WITH FLOODWAY

FRONT YARD SETBACK; 50'-0"
SIDE YARD SETBACK; 20'-0"

SITE DATA; BUILDING LOT COVERAGE; 8.23 % (COMBINED FOOTPRINT; 9235 SF)
IMPERVIOUS SURFACES; 33,781 SF (44%)
LANDSCAPED AREAS; 42,781 SF (56%)
PARKING; REFER A1.01 SITE PLAN

BUILDING DATA; CONSTRUCTION TYPE; VB - FULLY SPRINKLERED
OCCUPANCY; R, R2, S2
BUILDING HEIGHT; ALLOWED; 36'-0" ACTUAL; 33'-9"
NUMBER OF STORIES; 2
BUILDING GROSS AREAS;
B OCCUPANCY; 3150 SF
R2 OCCUPANCY; 4862 SF
S2 OCCUPANCY; 4004 SF
S2 ACCESSORY; 545 SF
TOTAL AREA; 12, 561 SF

ALL WORK SHALL CONFORM TO THE FOLLOWING CODES:

- 2019 CBC CALIFORNIA BUILDING CODE
- 2019 CEC CALIFORNIA ELECTRIC CODE
- 2019 CMC CALIFORNIA MECHANICAL CODE
- 2019 CPC CALIFORNIA PLUMBING CODE
- 2019 CEM CALIFORNIA ENERGY CODE
- 2019 CHBC CALIFORNIA HISTORICAL BUILDING CODE
- 2019 CFC CALIFORNIA FIRE CODE
- 2019 CALIFORNIA GREEN BUILDING STANDARDS CODE

PARKING REQUIREMENTS

	PUBLIC REQ'D	PROV'D	PRIVATE REQ'D	PROV'D
STANDARD 9'-0" X 19'-0" STALLS	-	5	13	13
OVERSIZED 10'-0" X 20'-0" STALLS	-	-	-	-
ACCESSIBLE PARKING CBC 11B §208.2 STANDARD VAN	-	1	-	-
ELECTRIC VEHICLE CHARGING SPACES CGCBC §5.106.5.3, CBC 11B §228.3.2.1 STANDARD	1	1	-	-
ACCESSIBLE STANDARD ACCESSIBLE VAN	0	0	-	-
CLEAN AIR/VANPOOL SPACES CGCBC §5.106.5.2	1	1	-	-
COMPACT SPACES SMC; 25 % LOTS OVER 20 STD. STALLS	N/A	0	N/A	-

BICYCLE
SHORT TERM BICYCLE PARKING
CGCBC §5.106.4.1.1
REQUIRED: 1
PROVIDED: 2

LONG TERM BICYCLE PARKING
CGCBC §5.106.4.1.2
REQUIRED: 1 X DBL RACK
PROVIDED: 1 X DBL RACK

GENERAL NOTES

1. THE ACCESSIBLE ROUTE OF TRAVEL (OR PATH OF TRAVEL) IS A CONTINUOUS UNOBSTRUCTED WALKWAY (OR PATH) CONNECTING ALL ACCESSIBLE ELEMENTS AND SPACES AS INDICATED ON THIS SHEET. THE CONTRACTOR SHALL VERIFY THAT A PERSON CAN NEGOTIATE THE ACCESSIBLE ROUTE WITH A DISABILITY USING A WHEELCHAIR AND THAT THE ROUTE IS ALSO SAFE AND USABLE BY PERSONS WITH OTHER DISABILITIES.
2. ALL WALKS, SIDEWALKS AND LANDINGS THAT ARE PART OF THE ACCESSIBLE ROUTE OF TRAVEL SHALL HAVE A CONTINUOUS COMMON SURFACE, NOT INTERRUPTED BY STEPS OR BY ABRUPT CHANGES IN LEVEL EXCEEDING 1/2 INCH, AND SHALL HAVE A MINIMUM WIDTH OF 48 INCHES, UNLESS NOTED OTHERWISE. THE SLOPE IN THE DIRECTION OF TRAVEL SHALL BE LESS THAN 1:20 (5%) WITH A MAXIMUM CROSS SLOPE OF 1/4 INCH PER FOOT (2%), UNLESS OTHERWISE NOTED.
3. ALL DESIGNATED ACCESSIBLE RAMPS SHALL HAVE A MAXIMUM SLOPE OF 1:12 (8.33%) IN THE DIRECTION OF TRAVEL WITH A MAXIMUM CROSS SLOPE OF 1/4 INCH PER FOOT (2%), UNLESS OTHERWISE NOTED.
4. AT FLATWORK, PROVIDE CONTROL JOINTS AS INDICATED AND EXPANSION JOINTS AT 20'-0" O.C. MAXIMUM, SEE DETAIL X/XX.XX
5. SEE CIVIL DRAWINGS FOR FULL EXTENT OF SITE WORK IN THIS CONTRACT.

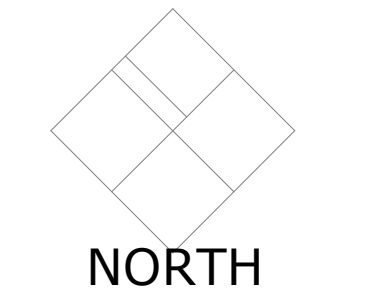
THIS DRAWING IS NOT FINAL OR TO BE USED FOR CONSTRUCTION UNTIL IT IS SIGNED BY THE ARCHITECT/ENGINEER

SCHEMATIC DESIGN

REVISION	BY	DATE

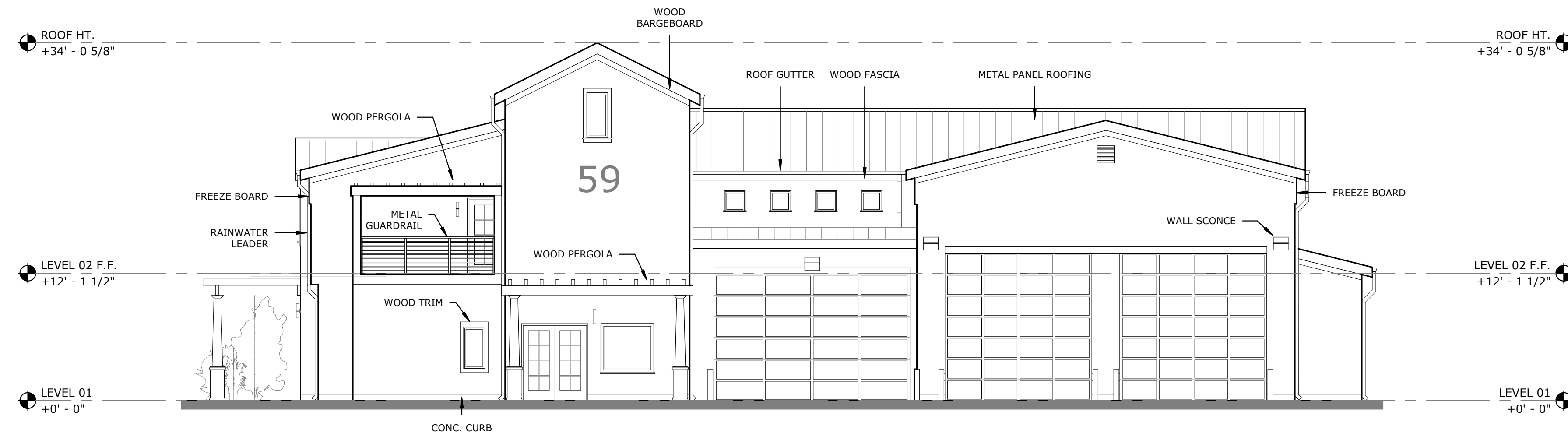
SAN MATEO COUNTY
**PESCADERO FIRE STATION 59
RELOCATION PROJECT**
LOCAL COASTAL PROGRAM AMENDMENT
Schematic Design Submission

SCHEMATIC SITE PLAN

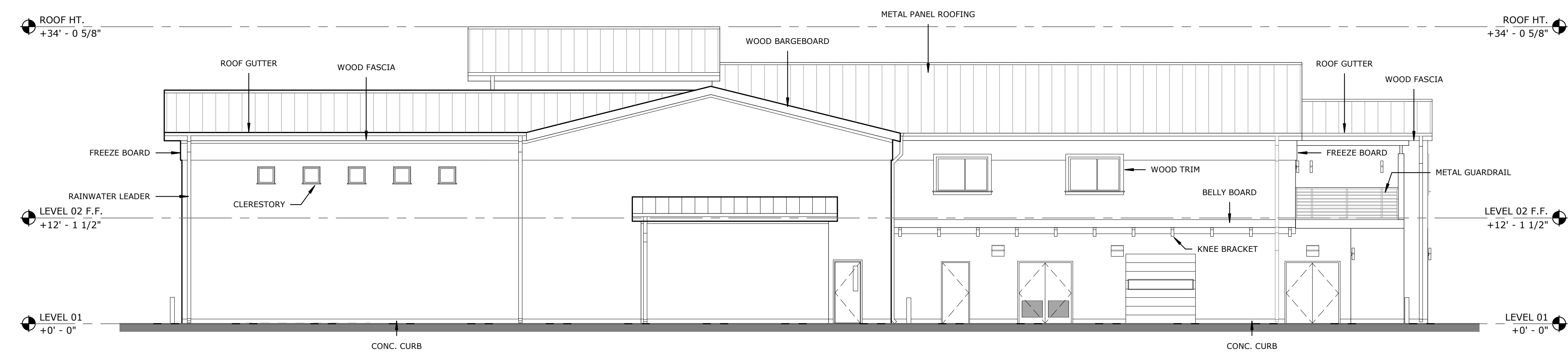


NORTH

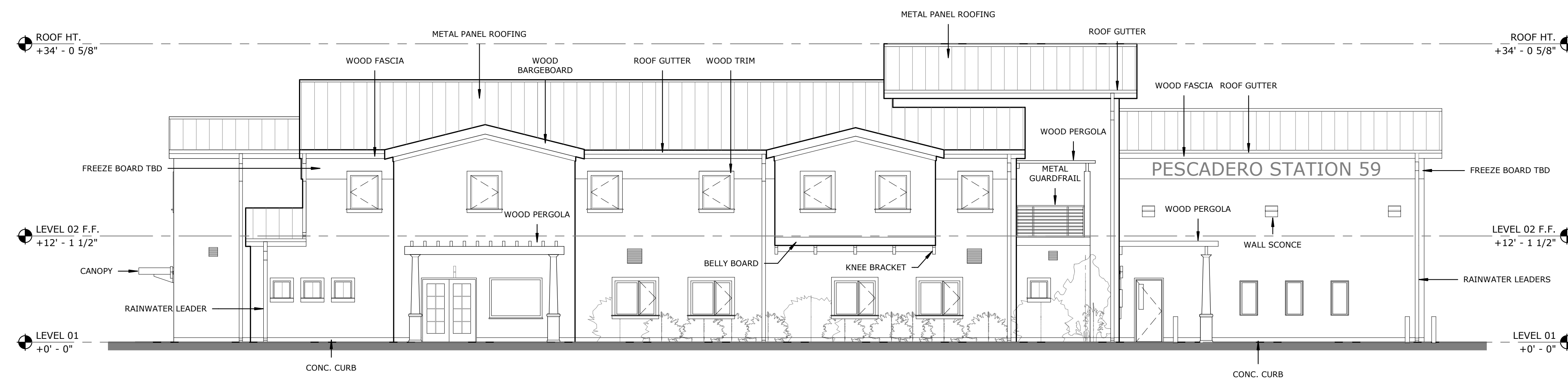
C0006.00
As Indicated
05/11/2020
A1.01



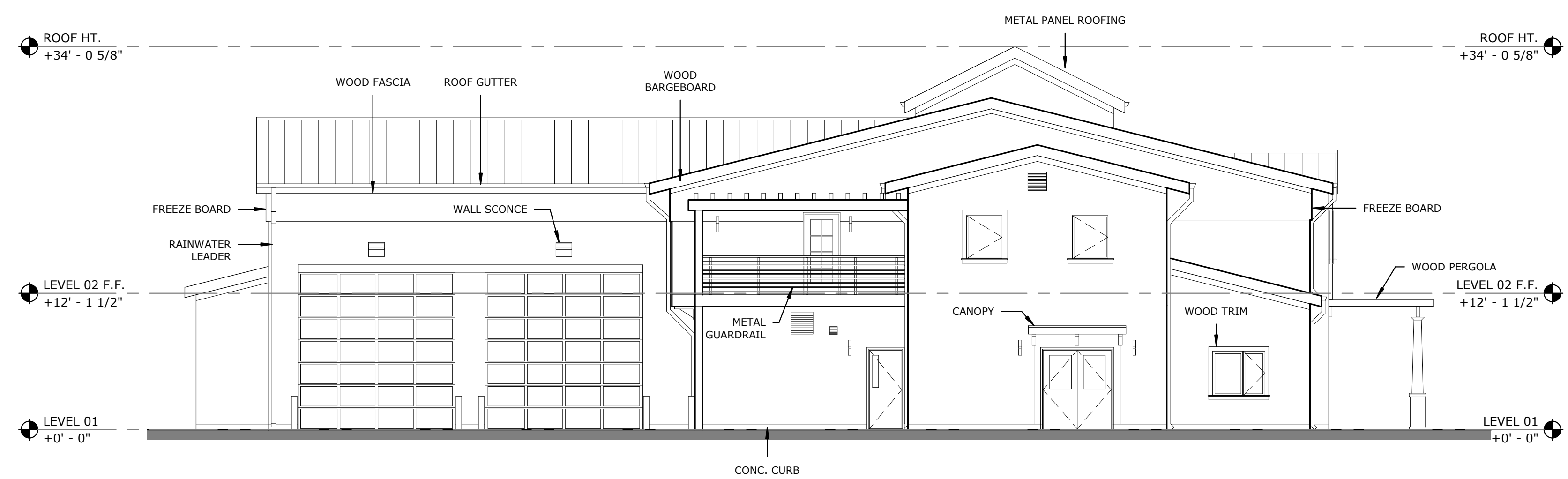
East Elevation
1/8" = 1'-0"



North Elevation
1/8" = 1'-0"



South Elevation
1/8" = 1'-0"



West Elevation
1/8" = 1'-0"

GENERAL NOTES

1. EXTERIOR MATERIAL TBD
2. ISSUED IN SUPPORT OF SMC LCP AMENDMENT #

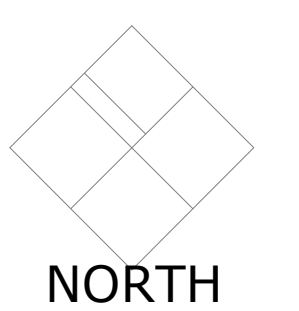
THIS DRAWING IS NOT FINAL OR TO BE USED FOR CONSTRUCTION UNTIL IT IS SIGNED BY THE ARCHITECT/ENGINEER

SCHEMATIC DESIGN

REVISION	BY	DATE

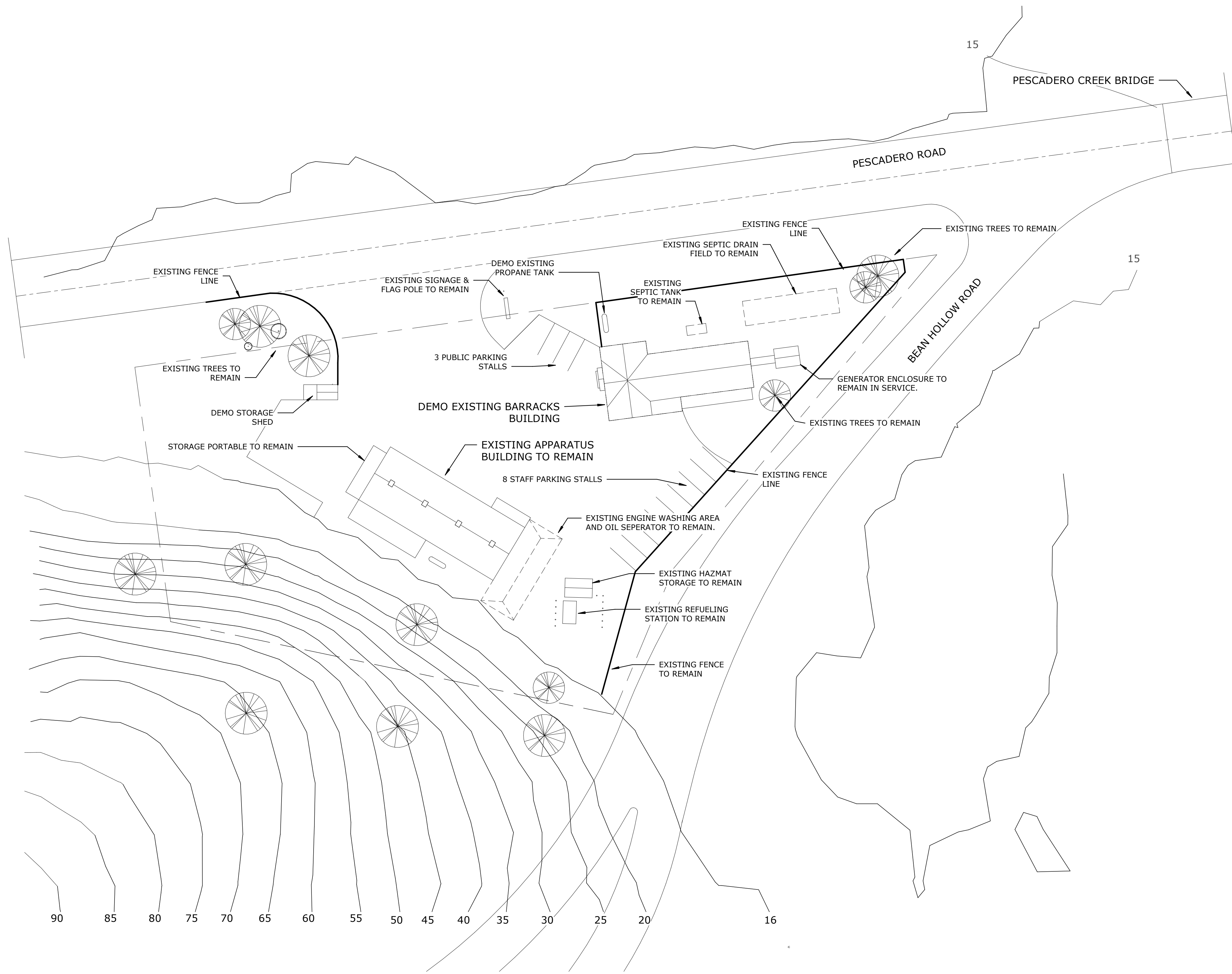
SAN MATEO COUNTY
PESCADERO FIRE STATION 59
RELOCATION PROJECT
LOCAL COASTAL PROGRAM AMENDMENT
Schematic Design Submission

EXTERIOR ELEVATIONS



C0006.00
1/8" = 1'-0"
05/11/2020

A3.00



PROJECT SITE, VACINITY MAP

SITE DATA;

CALFIRE PESCADERO STATION 59
1200 PESCADERO RD, PESCADERO, CA.
OWNER; SAN MATEO COUNTY
APH; 086-160-050.
SITE AREA; 1.28 ACRES

ZONING; PAD/ CD
LCP LAND USE; INSTITUTIONAL
VEHICULAR PARKING;
3 VISITOR
8 STAFF

TSUNAMI ZONE- NO
FLOOD ZONE; FLAT AREAS WITHIN ZONE AE. HILLSIDE IN
ZONE X.

APPARATUS BUILDING AREA; 3128 GSF (INCLUDING 105 NSF
LOFT)
STORAGE SHED; 80 NSF
STORAGE CONTAINER; 160 NSF
HAZMAT SHED; 176 NSF
BARRACKS BUILDING; AREA; 2175 GSF
GENERATOR SHED; 85 SF

**FIRE STATION 59 RELOCATION PROJECT
DESCRIPTION;**

PARTIAL DEMO OF EXISTING FIRE STATION 59 TO INCLUDE;
- DEMO BARRACKS BUILDING. PROVIDE GRAVEL PARKING SURFACE
AT LOCATION.
- DEMO PROPAANE TANK AND ALL CONNECTIONS.
- DEMO STORAGE SHED.

RETAIN AND KEEP IN SERVICE THE FOLLOWING SITE ELEMENTS;

- APPARATUS BUILDING.
- HAZMAT STORATE SHED.
- STORAGE CONTAINER.
- REFUELING STATION.
- GENERATOR SHED. RELOCATE PANELS ON BARRACK BUILDING AND DISTRIBUTION WIRING AS REQUIRED TO MAINTAIN SERVICE TO ALL RETAINED BUILDINGS, SERVICES AND OUTDOOR EQUIPMENT. POTENTIAL RELOCATION TO INCLUDE EXISTING UTILITY POLE, OVER HEAD LINES AND ANY EXISTING OR PROPOSED UNDERGROUND SERVICE.
- CSA-11 WATER SERVICE FOR DOMESTIC WATER TO BE DISCONNECTED. PROVIDE POTABLE DOMESTIC WATER STORAGE AND TREATMENT SYSTEM TO SERVE APPARATUS BUILDING AND ALL ASSOCIATED FUNCTIONS.
- RETAIN EXISTING SEPTIC SYSTEM. MAKE GOOD ALL EXISTING CONNECTIONS TO APPARATUS BUILDING AND OIL SEPERATOR. SYSTEM VIABILITY TO BE DETERMINED. OPTION TO RELOCATE SEPTIC SYSTEM TO BE VERIFIED IN THE FIELD.

1 EXISTING SITE PLAN
1" = 30'-0"

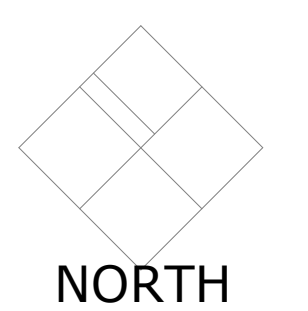
THIS SITE PLAN IS ISSUED FOR INFORMATION ONLY. THE INFORMATION CONTAINED HEREIN IS A REPRESENTATION ONLY. WHEREVER APPLICABLE REFER COUNTY OF SAN MATEO RECORDS FOR ASSOCIATED LEGAL MAPS AND SURVEYS.

THIS DRAWING IS NOT FINAL OR TO BE USED FOR CONSTRUCTION UNTIL IT IS SIGNED BY THE ARCHITECT/ENGINEER

REVISION BY DATE

SAN MATEO COUNTY
PESCADERO FIRE STATION 59
RELOCATION PROJECT
LOCAL COASTAL PROGRAM AMENDMENT
Schematic Design Submission

EXISTING SITE PLAN -
PARTIAL DEMO PLAN

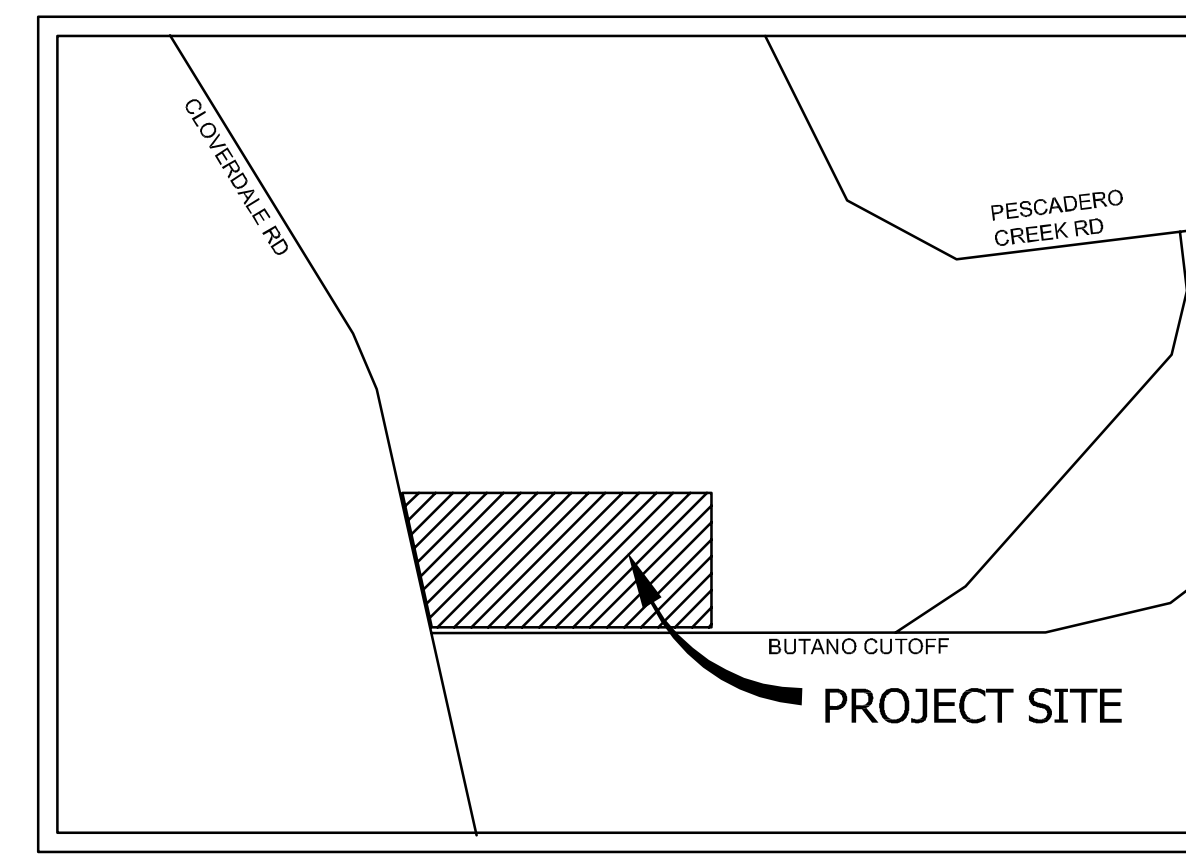


C0006.00
1" = 30'-0"
05/11/2020

A1.02

NOTES

1. THE BOUNDARY SHOWN IS DRAWN FROM RECORD INFORMATION. A FIELD SURVEY SHALL BE COMPLETED TO VERIFY THE SITE BOUNDARY.
2. 1 FT CONTOURS ARE SHOWN BASED ON USGS DATA.
3. EXISTING UTILITY INFORMATION IS SHOWN BASED ON VISIBLE FACILITIES ON AERIAL IMAGERY.



VICINITY MAP
NOT TO SCALE

LEGEND

- PROPERTY LINE
- ADJACENT LOT LINE
- ROAD RIGHT-OF-WAY
- ROAD CENTER LINE
- STORM DRAIN LINE
- SANITARY SEWER LINE
- DOMESTIC WATER LINE
- FLOW LINE/SWALE
- OVERHEAD LINE
- 50- EXISTING MAJOR CONTOUR
- 51- EXISTING MINOR CONTOUR

Dreyfuss+Blackford
architecture

3540 Folsom Blvd
Sacramento, CA
95816-6699
T 916.453.1234
dreyfussblackford.com

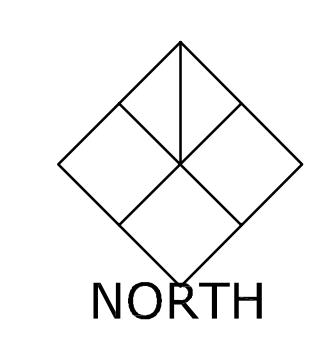
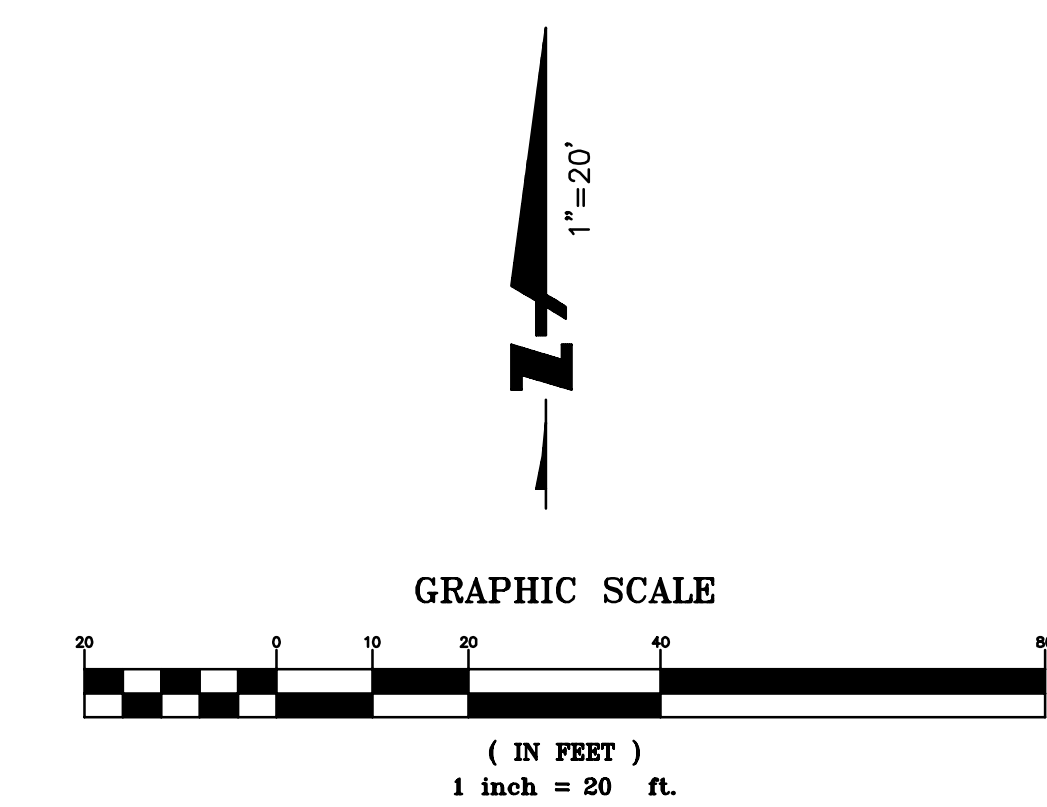


THIS DRAWING IS NOT FINAL OR TO BE USED FOR CONSTRUCTION UNLESS IT IS SIGNED BY THE ARCHITECT/ENGINEER

REVISION	BY	DATE

SAN MATEO COUNTY
PESCADERO FIRE STATION 59 RELOCATION PROJECT
PESCADERO FIRE STATION 59 RELOCATION PROJECT

EXISTING CONDITIONS



20192026
1:20
05/11/2020
C1.0

EARTHWORK

CUT:	1,000 CU-YD
BIOTENTION BASINS	100 CU-YD
STRUCTURAL FOUNDATIONS	350 CU-YD
ROUGH GRADING	450 CU-YD
SANITARY SEWER DRAINFIELD	1,100 CU-YD
	2,980 CU-YD
FILL:	
ROUGH GRADING	830 CU-YD
	830 CU-YD
BALANCE:	
CUT	2,980 CU-YD
FILL	830 CU-YD
	2,150 CU-YD (CUT)

EARTHWORK QUALITIES ARE APPROXIMATELY QUANTITIES AND ARE FURNISHED FOR PLANNING PURPOSES ONLY. THE ACTUAL AMOUNT OF EARTH MOVED WILL VARY DEPENDING ON THE PROPERTIES OF THE SOILS ENCOUNTERED, THE CONTRACTOR'S METHOD OF OPERATION, ETC. BIDDERS ARE RESPONSIBLE FOR DOING THEIR OWN QUANTITY TAKEOFF. ALL CUT/FILL CALCULATIONS DO NOT INCLUDE ANY SWELLING OR SHRINK FACTORS. QUANTITIES DO NOT INCLUDE OVER-EXCAVATION, TRENCHING, STRUCTURAL FOUNDATION OR PIERS (IF ANY).

NOTES

- STORMWATER HAS BEEN SCHEMATICALLY SHOWN TO ADHERE TO THE SAN MATEO COUNTY DRAINAGE REQUIREMENTS. THIS PROJECT WILL BE SUBJECT TO THE BASIC DRAINAGE REVIEW FOR THE COUNTY PLANNING OR BUILDING PERMIT. THE CURRENT SITE SHOWS 33,781 SF OF IMPERVIOUS AREA, AND THE PROJECT WILL UTILIZE BIOTENTION RAIN GARDENS WITH INFILTRATION TO ADHERE TO TREATMENT REQUIREMENTS, AND THE PEAK FLOW AND VOLUME CONTROL DESIGN CRITERIA. THE SITE HAS BEEN SHOWN TO INFILTRATE AT A RATE OF 7.44 IN/HR.
- THE SANITARY SEWER DRAIN FIELD HAS BEEN SCHEMATICALLY SHOWN TO ACCOMMODATE 1,000 GAL/DAY, 77 GAL/DAY FOR 13 HABITANTS. THE DRAIN FIELD WILL A BE SHALLOW SEPTIC DRAIN FIELD.
- A CSA-11 WATER MAIN EXTENSION IS PLANNED TO PROVIDE SERVICE TO THE SITE AT BUTANO ROAD.
- POWER POLE LOCATIONS ARE APPROXIMATE. A GROUND TOPOGRAPHIC SURVEY IS REQUIRED TO VERIFY EXACT LOCATIONS.

ABBREVIATIONS

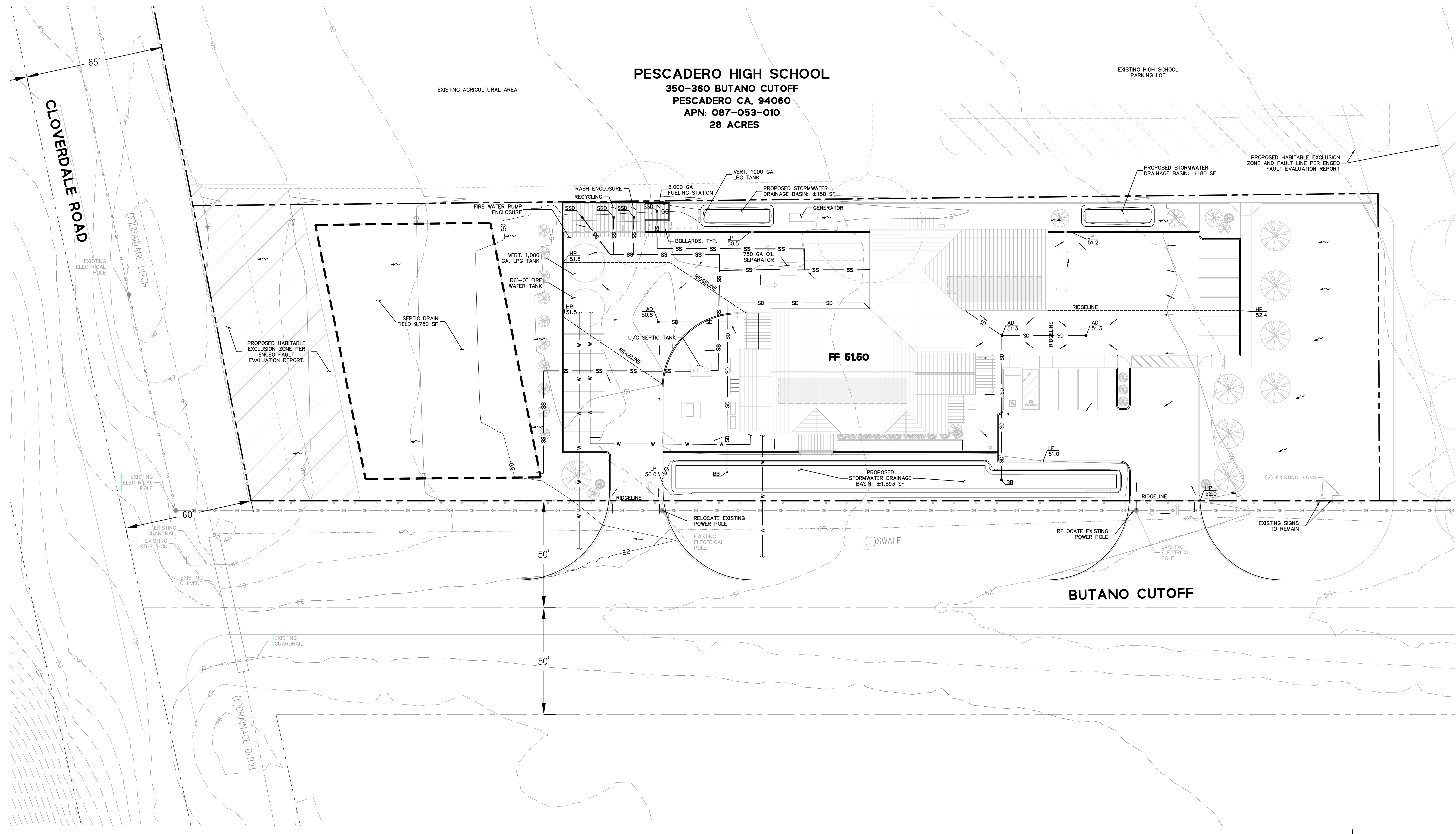
AD	AREA DRAIN
BB	BUBBLER BOX
HP	HIGH POINT
LP	LOW POINT
SD	STORM DRAIN
SS	SANITARY SEWER
W	WATER

LEGEND

---	PROPERTY LINE	
---	ADJACENT LOT LINE	
---	EASEMENT LINE	
---	PODIUM WALL	
---	SD	STORM DRAIN LINE
---	SS	SANITARY SEWER LINE
---	W	DOMESTIC WATER LINE
---	OVERHANG LINE	
•	STORM DRAIN AREA DRAIN (AD)	
•	STORM DRAIN BUBBLER BOX (BB)	
•	SANITARY SEWER DRAIN (SSD)	
□	TREATMENT BASIN	
---	40	PROPOSED MAJOR CONTOUR
---	41	PROPOSED MINOR CONTOUR
---	40	EXISTING MAJOR CONTOUR
---	41	EXISTING MINOR CONTOUR

Dreyfuss+Blackford
architecture

3540 Folsom Blvd
Sacramento, CA
95816-6699
T 916.453.1234
dreyfussblackford.com



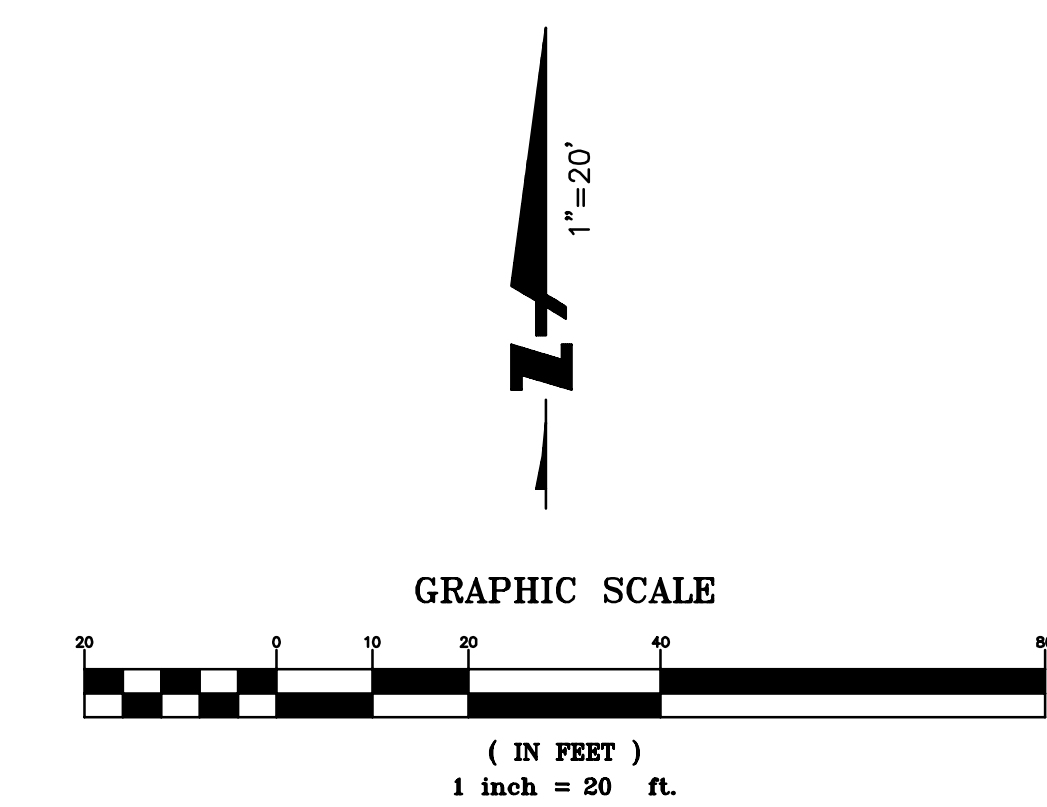
THIS DRAWING IS NOT FINAL OR TO BE USED FOR CONSTRUCTION UNLESS IT IS SIGNED BY THE ARCHITECT/ENGINEER

REVISION	BY	DATE
----------	----	------

SAN MATEO COUNTY
PESCADERO FIRE STATION 59 RELOCATION PROJECT
PESCADERO FIRE STATION 59 RELOCATION PROJECT

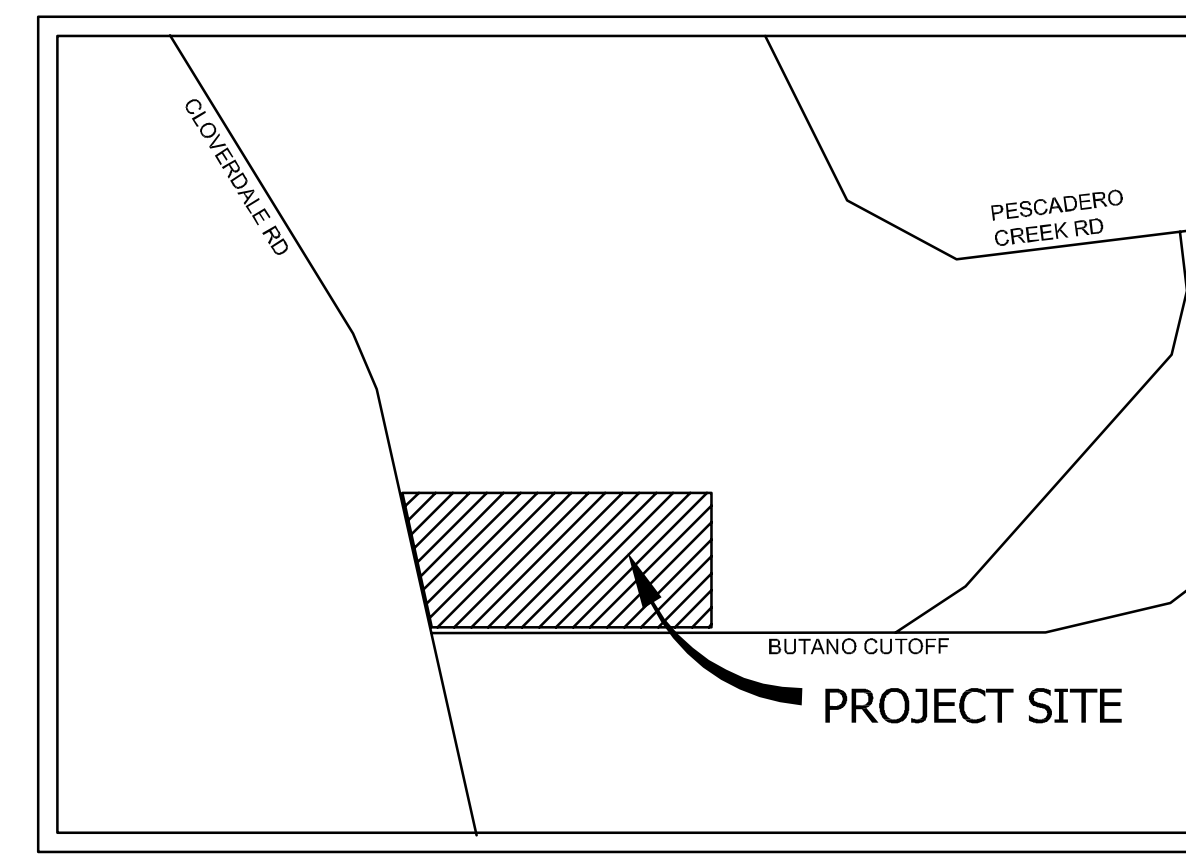
PRELIMINARY GRADING, DRAINAGE, AND UTILITY PLAN

20192026
1:20
05/11/2020
C2.0



NOTES

1. THE BOUNDARY SHOWN IS DRAWN FROM RECORD INFORMATION. A FIELD SURVEY SHALL BE COMPLETED TO VERIFY THE SITE BOUNDARY.
2. 1 FT CONTOURS ARE SHOWN BASED ON USGS DATA.
3. EXISTING UTILITY INFORMATION IS SHOWN BASED ON VISIBLE FACILITIES ON AERIAL IMAGERY.



VICINITY MAP
NOT TO SCALE

LEGEND

- PROPERTY LINE
- ADJACENT LOT LINE
- ROAD RIGHT-OF-WAY
- ROAD CENTER LINE
- STORM DRAIN LINE
- SANITARY SEWER LINE
- DOMESTIC WATER LINE
- FLOW LINE/SWALE
- OVERHEAD LINE
- 50- EXISTING MAJOR CONTOUR
- 51- EXISTING MINOR CONTOUR

Dreyfuss+Blackford
architecture

3540 Folsom Blvd
Sacramento, CA
95816-6699
T 916.453.1234
dreyfussblackford.com

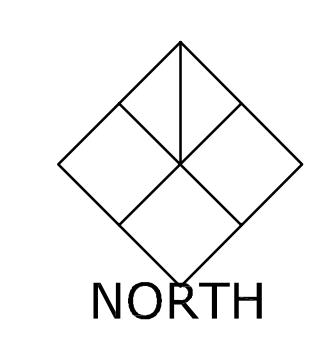
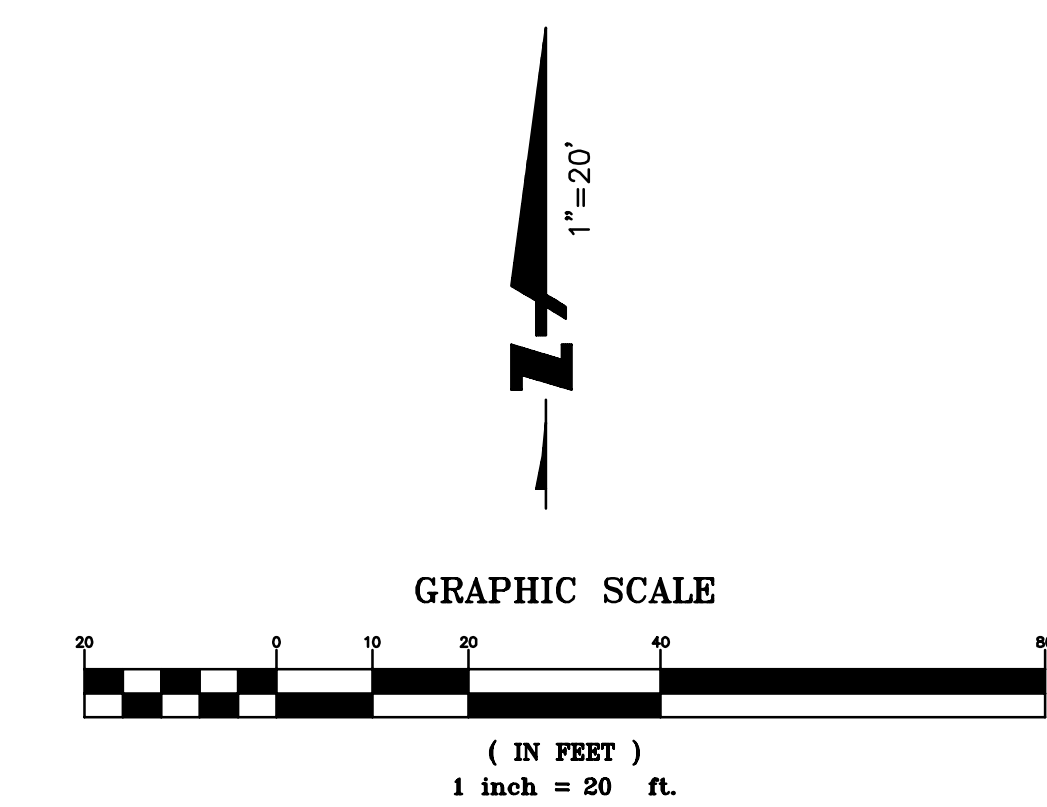


THIS DRAWING IS NOT FINAL OR TO BE USED FOR CONSTRUCTION UNLESS IT IS SIGNED BY THE ARCHITECT/ENGINEER

REVISION	BY	DATE

SAN MATEO COUNTY
PESCADERO FIRE STATION 59 RELOCATION PROJECT
PESCADERO FIRE STATION 59 RELOCATION PROJECT

EXISTING CONDITIONS



20192026
1:20
05/11/2020
C1.0

EARTHWORK

CUT:	1,000 CU-YD
BIOTENTION BASINS	100 CU-YD
STRUCTURAL FOUNDATIONS	350 CU-YD
ROUGH GRADING	450 CU-YD
SANITARY SEWER DRAINFIELD	1,100 CU-YD
	2,980 CU-YD
FILL:	
ROUGH GRADING	830 CU-YD
	830 CU-YD
BALANCE:	
CUT	2,980 CU-YD
FILL	830 CU-YD
	2,150 CU-YD (CUT)

EARTHWORK QUALITIES ARE APPROXIMATELY QUANTITIES AND ARE FURNISHED FOR PLANNING PURPOSES ONLY. THE ACTUAL AMOUNT OF EARTH MOVED WILL VARY DEPENDING ON THE PROPERTIES OF THE SOILS ENCOUNTERED, THE CONTRACTOR'S METHOD OF OPERATION, ETC. BIDDERS ARE RESPONSIBLE FOR DOING THEIR OWN QUANTITY TAKEOFF. ALL CUT/FILL CALCULATIONS DO NOT INCLUDE ANY SWELLING OR SHRINK FACTORS. QUANTITIES DO NOT INCLUDE OVER-EXCAVATION, TRENCHING, STRUCTURAL FOUNDATION OR PIERS (IF ANY).

NOTES

- STORMWATER HAS BEEN SCHEMATICALLY SHOWN TO ADHERE TO THE SAN MATEO COUNTY DRAINAGE REQUIREMENTS. THIS PROJECT WILL BE SUBJECT TO THE BASIC DRAINAGE REVIEW FOR THE COUNTY PLANNING OR BUILDING PERMIT. THE CURRENT SITE SHOWS 33,781 SF OF IMPERVIOUS AREA, AND THE PROJECT WILL UTILIZE BIOTENTION RAIN GARDENS WITH INFILTRATION TO ADHERE TO TREATMENT REQUIREMENTS, AND THE PEAK FLOW AND VOLUME CONTROL DESIGN CRITERIA. THE SITE HAS BEEN SHOWN TO INFILTRATE AT A RATE OF 7.44 IN/HR.
- THE SANITARY SEWER DRAIN FIELD HAS BEEN SCHEMATICALLY SHOWN TO ACCOMMODATE 1,000 GAL/DAY, 77 GAL/DAY FOR 13 HABITANTS. THE DRAIN FIELD WILL A BE SHALLOW SEPTIC DRAIN FIELD.
- A CSA-11 WATER MAIN EXTENSION IS PLANNED TO PROVIDE SERVICE TO THE SITE AT BUTANO ROAD.
- POWER POLE LOCATIONS ARE APPROXIMATE. A GROUND TOPOGRAPHIC SURVEY IS REQUIRED TO VERIFY EXACT LOCATIONS.

ABBREVIATIONS

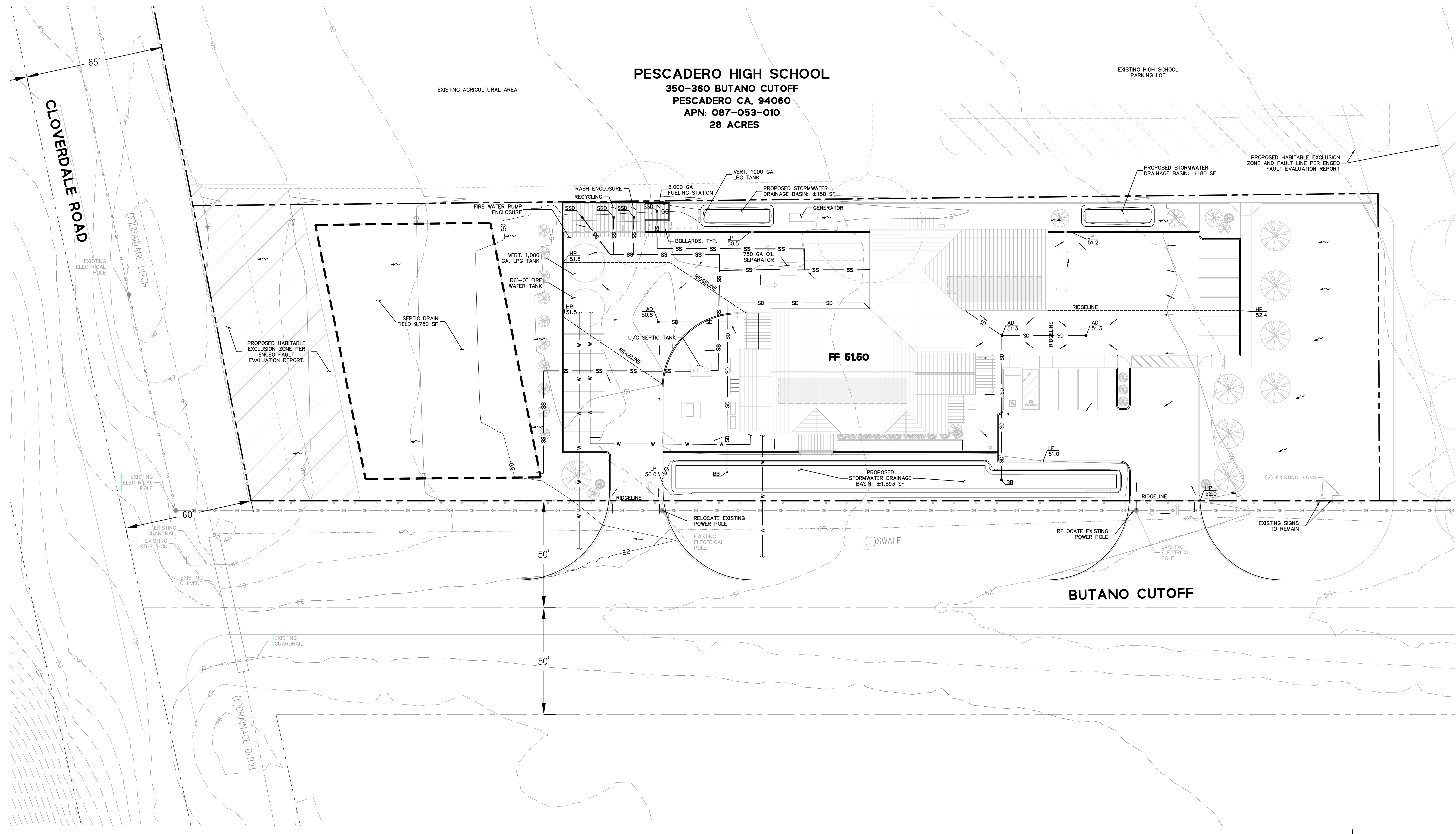
AD	AREA DRAIN
BB	BUBBLER BOX
HP	HIGH POINT
LP	LOW POINT
SD	STORM DRAIN
SS	SANITARY SEWER
W	WATER

LEGEND

---	PROPERTY LINE	
---	ADJACENT LOT LINE	
---	EASEMENT LINE	
---	PODIUM WALL	
---	SD	STORM DRAIN LINE
---	SS	SANITARY SEWER LINE
---	W	DOMESTIC WATER LINE
---	OVERHANG LINE	
•	STORM DRAIN AREA DRAIN (AD)	
•	STORM DRAIN BUBBLER BOX (BB)	
•	SANITARY SEWER DRAIN (SSD)	
□	TREATMENT BASIN	
---	40	PROPOSED MAJOR CONTOUR
---	41	PROPOSED MINOR CONTOUR
---	40	EXISTING MAJOR CONTOUR
---	41	EXISTING MINOR CONTOUR

Dreyfuss+Blackford
architecture

3540 Folsom Blvd
Sacramento, CA
95816-6699
T 916.453.1234
dreyfussblackford.com



THIS DRAWING IS NOT FINAL OR TO BE USED FOR CONSTRUCTION UNLESS IT IS SIGNED BY THE ARCHITECT/ENGINEER

REVISION	BY	DATE
----------	----	------

SAN MATEO COUNTY
PESCADERO FIRE STATION 59 RELOCATION PROJECT
PESCADERO FIRE STATION 59 RELOCATION PROJECT

PRELIMINARY GRADING, DRAINAGE, AND UTILITY PLAN

20192026
1:20
05/11/2020
C2.0

