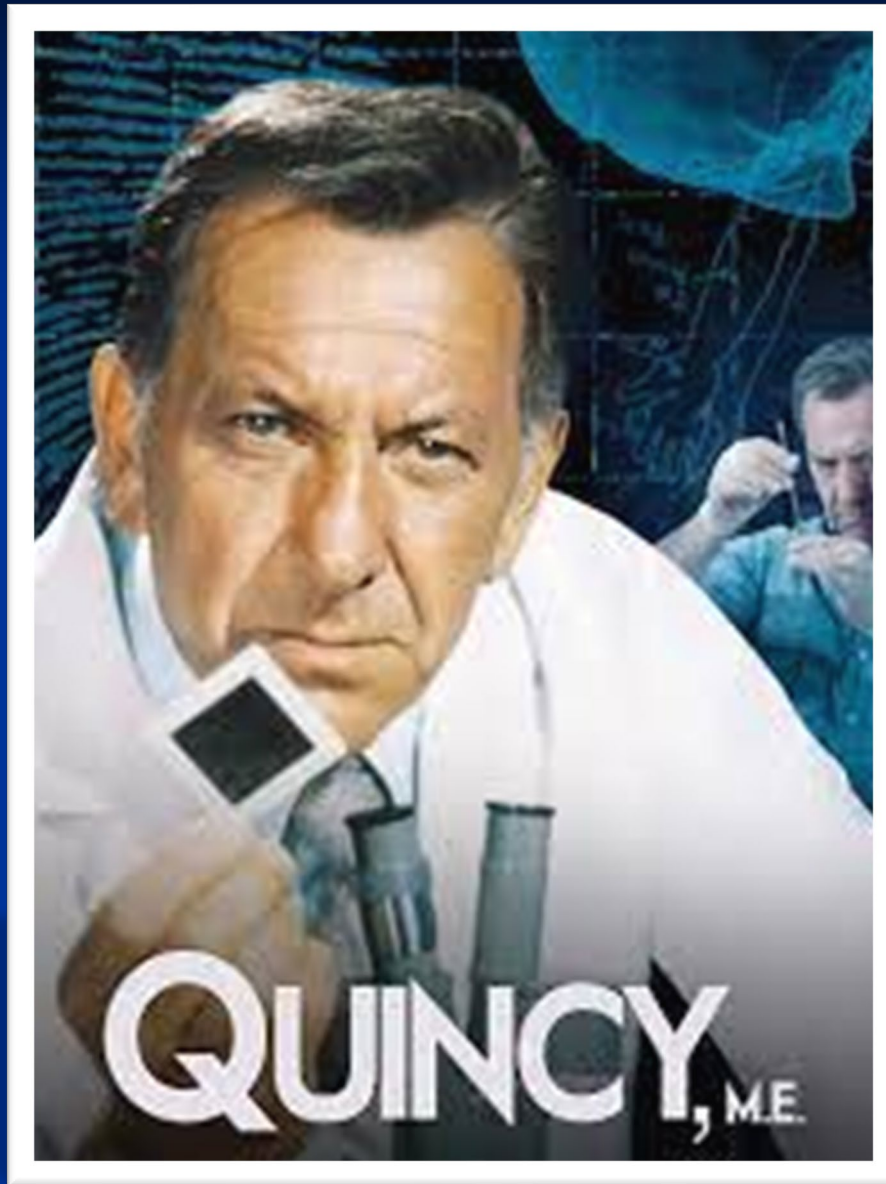




# CORONER'S OFFICE

Robert J. Foucrault, Coroner







# Administration & Investigations



# San Mateo County- Office of the Coroner

## Management:

- Coroner
- Chief Deputy Coroner
- (3) Administrative Staff

## Investigations:

- Supervising Deputy Coroner
- (8) Deputy Coroners

## Pathology:

- Contracted Board-Certified Forensic Pathologists
- (3) Forensic Autopsy Technicians

# Operational Hours

- Administration Division (M-F, 0800 to 1700 hrs)
- Investigations Division (24/7 Operation)
- Pathology Division (0730-1600 hrs, 5 days/wk)

# Accreditation & Certification

Office achieved accreditation by the International Association of Medical Examiners and Coroners (IACME) in November 2019.

Deputy Coroners are certified Diplomats with American Board of Medicolegal Death Investigators (ABMDI)

Forensic Pathologists are Board-Certified Physicians

Office follows National Association of Medical Examiners (NAME) guidelines and criteria for best practices

# 2023 Statistics

Total Cases: 2,056

Accepted into  
Jurisdiction: 583

- Natural: 276
- Homicides: 14
  - OICI: 6
- Accidents: 218
- Suicides: 61
- Undetermined: 9

# Role of the Coroner (C.G.C. §27491.2)

Determine the circumstances, manner, and cause of death for cases where Coroner jurisdiction was assumed.

- Deputy Coroner
  - Scene investigation
  - Identify the decedent
  - Secure property & collect evidence
  - Notify next of kin
  - Determine circumstances and manner of death
  
- Forensic Pathologist
  - Complete examination
  - Determine cause of death



**Duty of the  
Coroner  
California  
Government  
Code  
(C.G.C.)  
§27491**

To inquire into any unexpected or unnatural deaths within San Mateo County including:

- Homicide
- Suicide
- Suspicion of Criminal Act
- Accident (new or old)
- Continued Absence of a Physician
- Pediatric or SIDS
- Deaths of Unidentified Persons
- Solitary Deaths

# What happens when a death is pronounced?

- Death is reported to the Coroner's Office from law enforcement or medical personnel
- Deputy Coroner asks questions to determine if the Coroner's Office must take jurisdiction and complete a full investigation into the cause and manner of death
- If death requires Coroner's Office involvement, a Deputy Coroner responds immediately to the scene

**Not all deaths  
are reported to  
the Coroner's  
Office**

Natural deaths where the patient is on hospice care or is an inpatient at a hospital

Death is natural and there are no other legal reasons for the Coroner's Office to be involved

# Public Outreach

- Participation on death review teams
  - Child Death Review
  - Elder Death Review
  - Domestic Violence Death Review
- Save-A-Life Program
- Data Sharing on National, State, and Local Level
  - National Violent Death Reporting System
  - State Unintentional Drug Overdose Reporting System
  - Suspected Overdose Death Detection
  - Suspected Alcohol Death Detection
  - Other epidemiological requests



# Noteworthy Cases in San Mateo County

San Bruno  
Pipeline  
Explosion

- 8 deceased

9 Sep. 2010

Asiana Aircraft  
Flight 214 Failed  
Landing

- 3 deceased

7 June 2013

5 May 2013

Limousine Fires  
on San Mateo-  
Hayward Bridge

- 5 deceased

23 Jan. 2023

Half Moon Bay  
Mass Shooting

- 7 deceased



# New State of the Art Pathology Division

- 10,000 sq ft facility
- Secured sally port
- Main Suite w/ two autopsy stations
- Isolated Homicide / Decomp Autopsy Suite with an Observation Room and Push to Talk intercom system
- Two coolers and one freezer which can hold up to 57 decedents
- Radiology room with LODOX body scanner

# LODOX eXero

Scans body in less than 12 seconds



Produces high quality x-ray images to help Forensic Pathologist identify foreign objects, skeletal injuries, and medical paraphernalia / implants.





*Secured Sally Port*



*Intake Area*



Thank you!



*[smcgov.org/coroner](http://smcgov.org/coroner)*